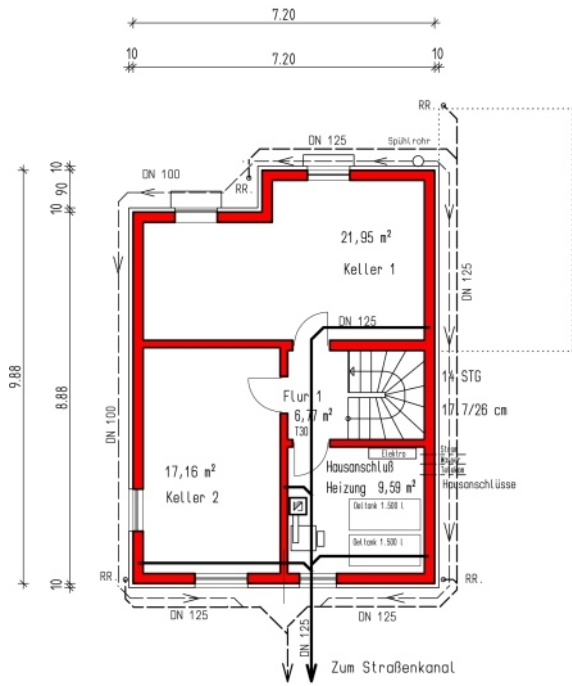
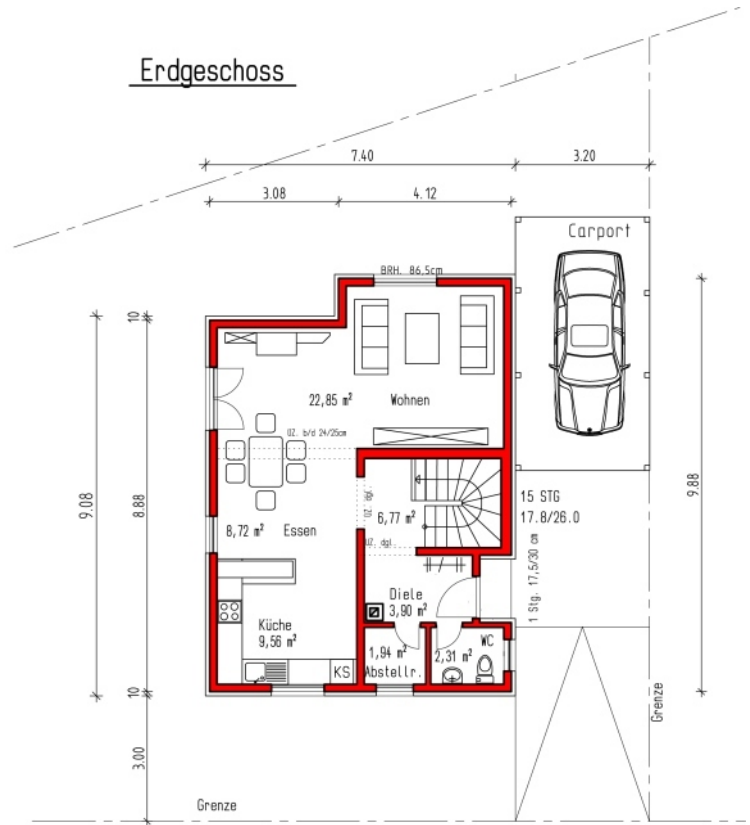


1. freistehendes Einfamilienhaus

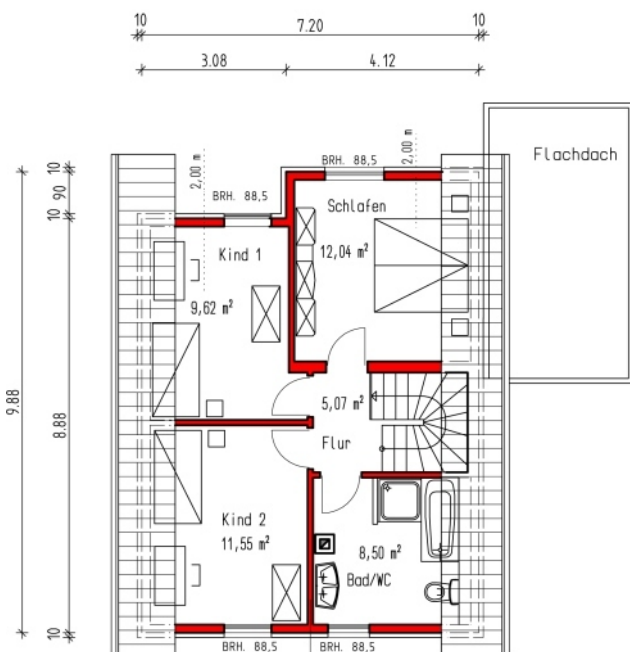
Kellergeschoss



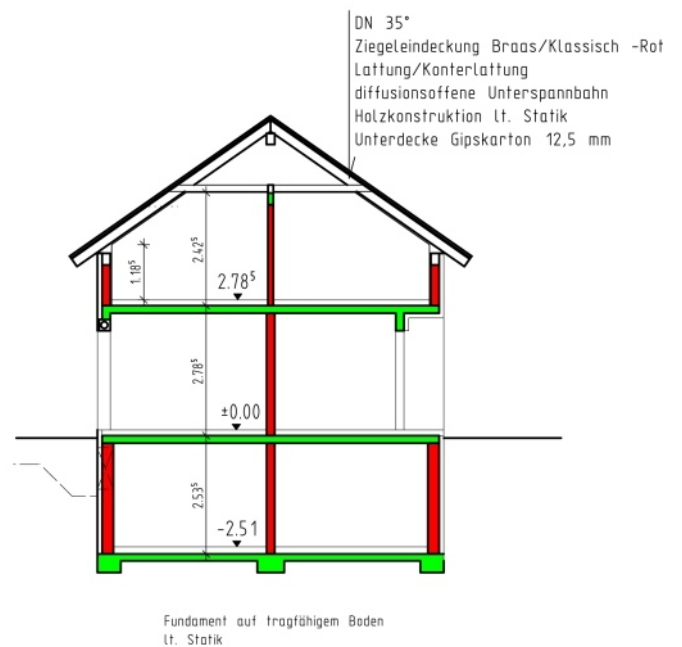
Erdgeschoss



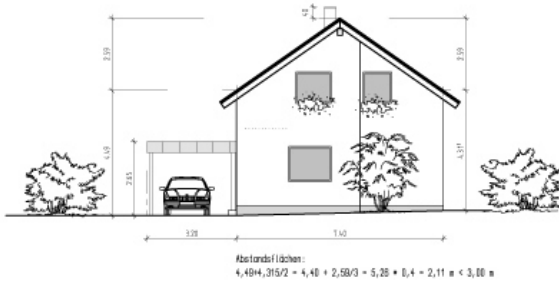
Obergeschoss



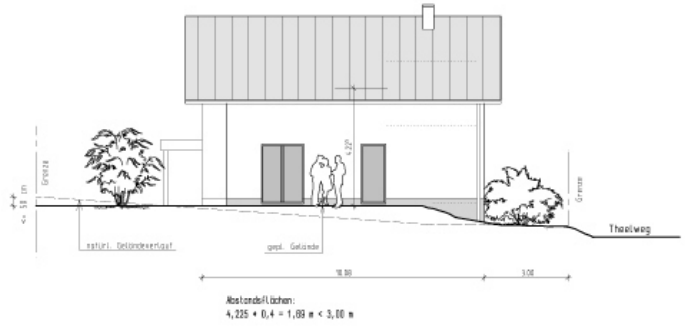
Querschnitt



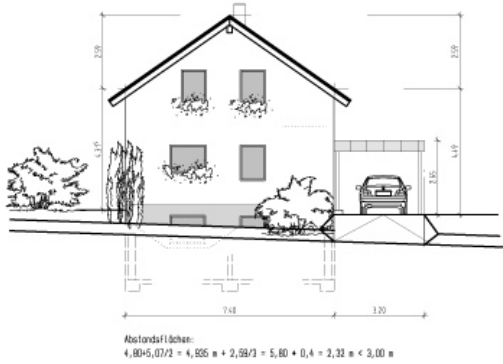
Rückansicht



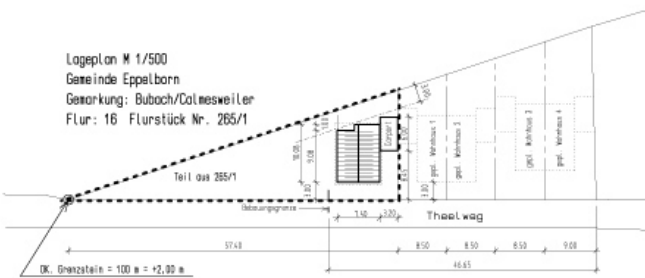
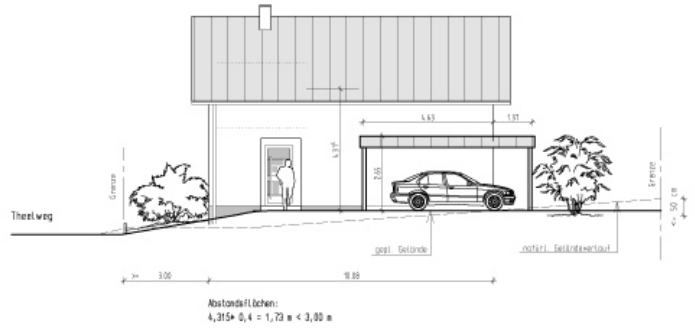
Linke Seitenansicht



Straßenansicht



Rechte Seitenansicht



DK. vorh. Grenzstein = 100 m / Sockelhöhe neues Wohnhaus = 98,00 = ± 0,00