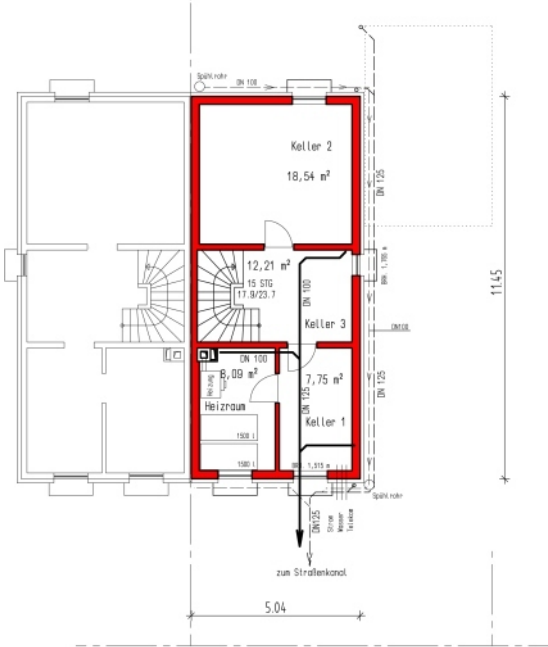
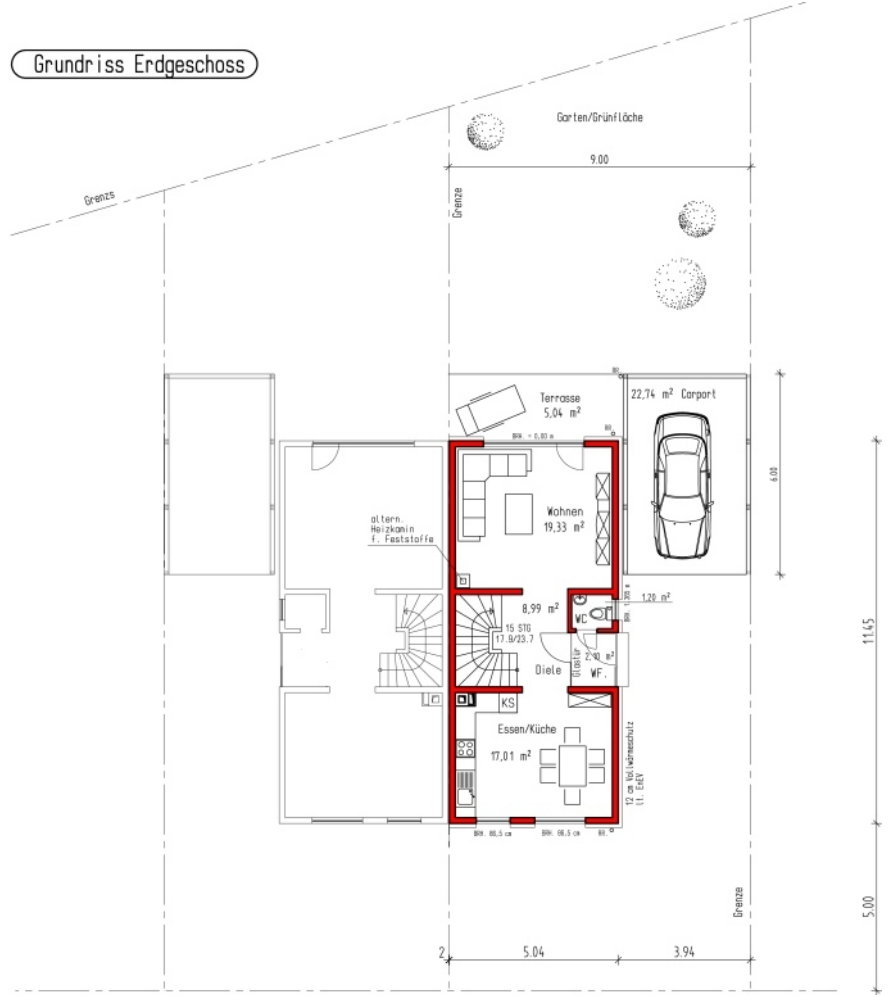


### 3. Doppelhaushälfte rechts

Grundriss Kellergeschoss

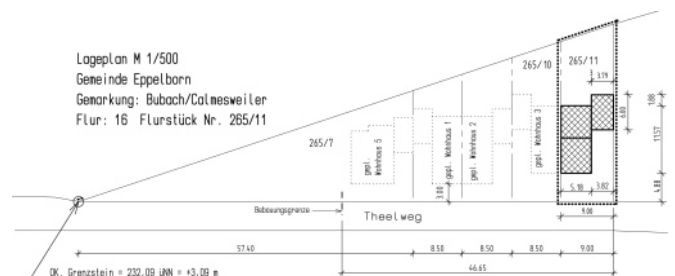
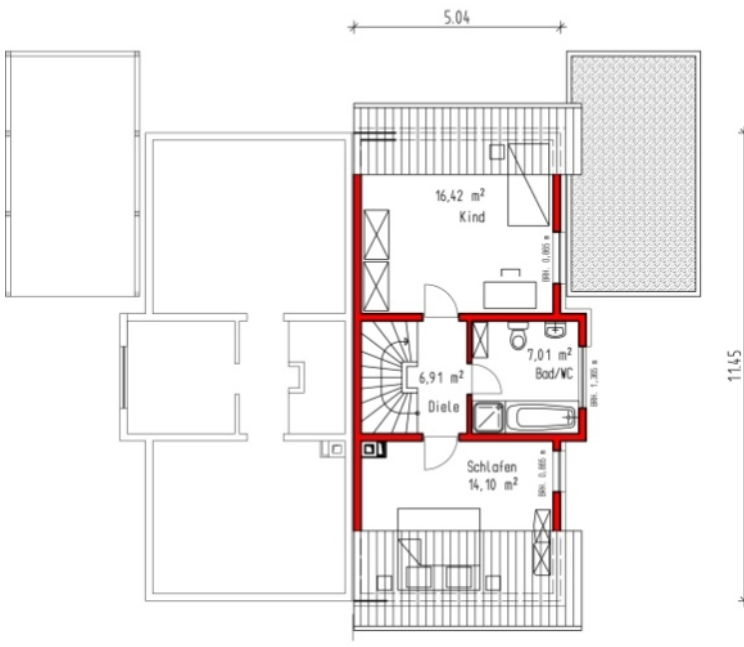


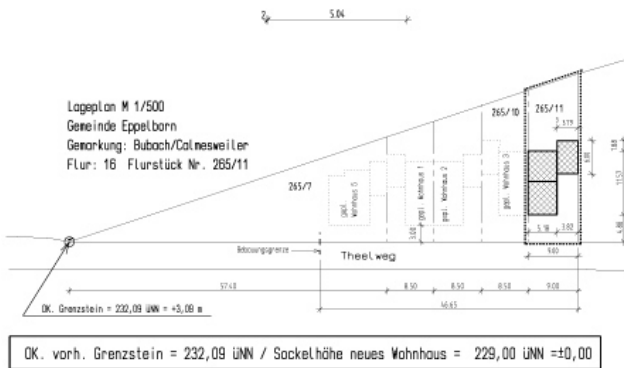
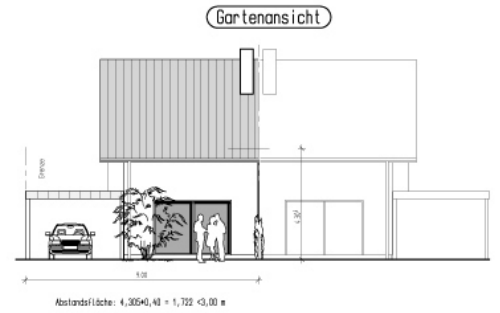
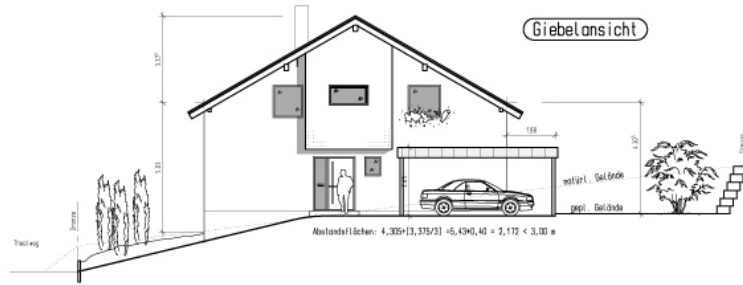
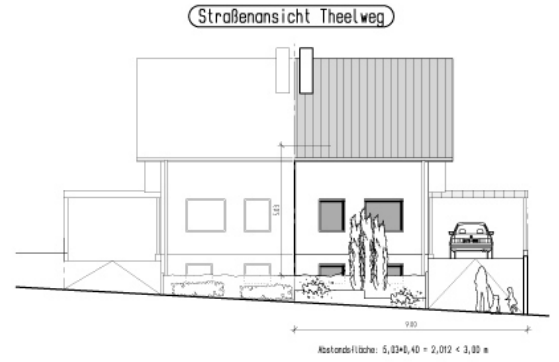
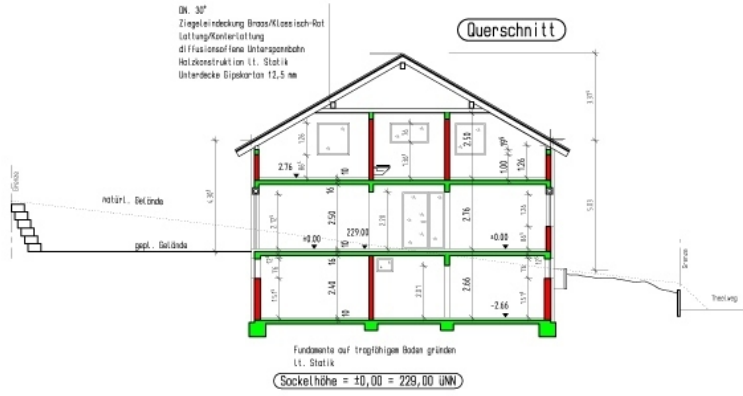
Grundriss Erdgeschoss



Theelweg (unbef.)

Übersicht Obergeschoss



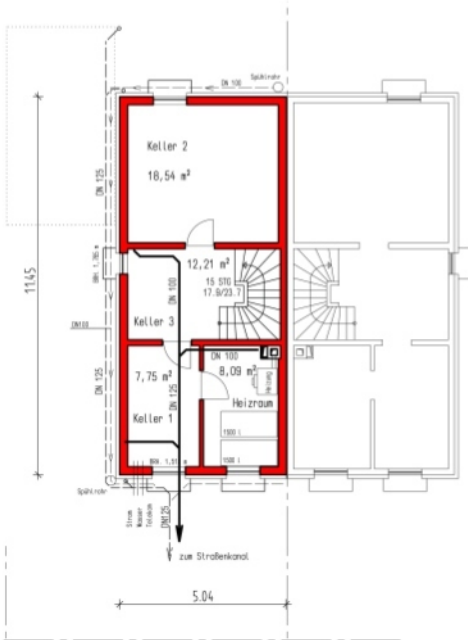


### 3. Doppelhaushälfte links

Grundriss Erdgeschoss



Grundriss Kellergeschoss



Theelweg ( unbef. )

Übersicht Obergeschoss

